



## PATHWAY 2 CAREERS

Education with Destination

*Pathway2Careers is a career readiness service provider that offers a collection of resources to support career readiness efforts in educational settings. The P2C approach places considerable emphasis on the use of regional labor market data to identify local high-value careers, ensuring that education practices enhance students' access to good jobs in their communities.*

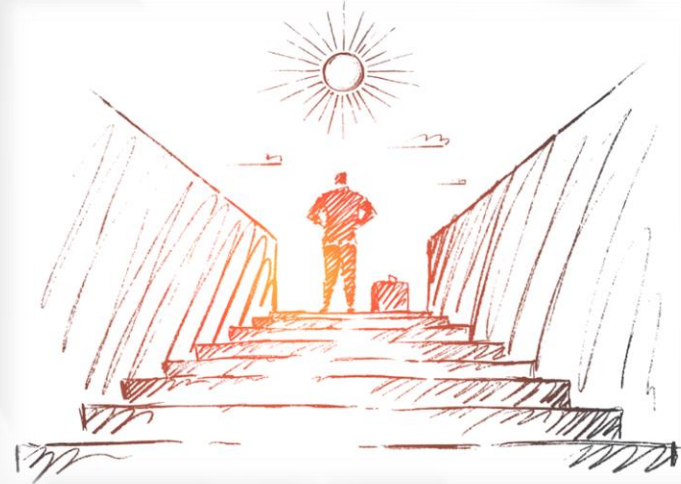
P2C Website [pathway2careers.com](http://pathway2careers.com)

Labor Market Data Systems  
[careerpathways-nm.com](http://careerpathways-nm.com)  
[tsbadatadashboard.com](http://tsbadatadashboard.com)

Online Professional Development  
[pathway2pd.com](http://pathway2pd.com)

Video Overviews  
[youtu.be/ETf6c36dCI0](https://youtu.be/ETf6c36dCI0)  
[youtu.be/loIKjIDzPhk](https://youtu.be/loIKjIDzPhk)

Contact  
Dr. Joseph Goins, CEO  
[jgoins@ns4ed.com](mailto:jgoins@ns4ed.com)  
(865) 414-0033



### What does P2C offer?

*P2C strives to improve access to labor market data and encourage the use of data-informed practices in career education.*

*Our products and services include:*

- Labor Market Data Tools
- Professional Development
- Perkins V Support
- Employer Relationships
- Career Pathway Mapping
- Career Exploration Resources
- Career-Focused Curriculum
- Customized Career Materials

### Who can benefit from P2C?

*As a comprehensive career service provider, P2C offers a wide variety of products and services for **administrators, faculty, students, and parents**, ranging from easy-to-use labor market systems to career-immersive curriculum.*

### What is the pricing for P2C?

*Access to the P2C labor market data system, with the accompanying online professional development training, ranges from \$1,000 to \$5,000 per district. Pricing for multiple districts or statewide access is also available. The cost of additional services can vary according to district, region, or state needs.*



# Data-Informed Career Education Model

