



Professional Development

P2C helps connect educators to the power of labor market information (LMI) with comprehensive training and professional development experiences. These learning opportunities, designed explicitly for educators, focus on presenting basic content and strategies for the use of LMI in educational practices.

The P2C labor market training offers a fully online experience that incorporates the following features.



24-Hour Online Access



Video Tutorials



Printable Guides



Comprehensive LMI Resource Center



Learning Assessments and Completion Certificates

Online Training

Pathway2Careers helps connect individuals to the power of labor market information (LMI) with customized training and professional development experiences. These learning opportunities, designed explicitly for educators, focus on presenting basic content and strategies for use of LMI in educational practices. P2C is committed to providing clear and engaging instructional materials that significantly enhance the use of education-focused LMI in your community.

The P2C online training experiences provide access to the following features.

- 24-Hour Online Access
- Video Tutorials
- Printable Guides
- Comprehensive LMI Resource Center
- Learning Assessments and Completion Certificates

All materials are straightforward and easy to access. Users can easily move between courses and modules and explore topics that are most relevant to their learning needs.

My Profile

Expand All | Collapse All

Profile

Username: student1
Email: student1@714web.com

Edit profile

Registered Series	Certificate	Status
Series 1		

Users are assigned a profile where they can monitor their progress and access earned certificates. All courses can be accessed from the profile page or the homepage.

Online Courses that Focus on Why, How, and Who

Course 1 Modules and Topics

WHY is the use of LMI critical in education practice? Learners are provided with a thorough review of current shifts in labor market demand and the need to prepare students for the future of work.

HOW is LMI used in education practice? Useful terms and definitions are reviewed, along with strategies for using LMI to identify high-value careers. The application of this information in everyday settings is also discussed.

WHO can benefit from LMI and its application in planning, policy, and practice? Course topics focus on the use of LMI in student career exploration and decision-making activities with educators and policymakers.

Introduction to Labor Market Exploration for Educators

Module 1
The Future of Work

- Rethinking College and Career Readiness
- Preparing Students for Careers
- The Shifting Workforce Landscape
- Problems and Solutions

Module 2
Using LMI to Connect with the Future of Work

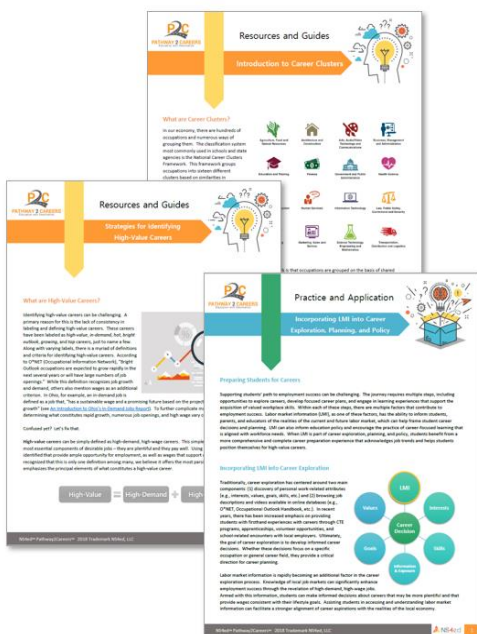
- Connecting with the Future of Work
- The Power of Awareness to Inform and Prepare
- What is Labor Market Information (LMI)?
- P2C Labor Market Exploration System

Module 3
Learning to Use LMI

- Staying Connected to Work
- Basic Terms and Definitions
- Identifying High-Value Careers
- Exploring LMI Using the P2C System

Module 4
Incorporating LMI into Education Processes

- Career Exploration
- Career Planning
- Policy and Practice
- Resources and Tools



Printable PDF guides are available in the resource center and completion certificates are presented after course assessments have been submitted.

pathway2pd.com

Preview the P2C professional development courses.